

"DEWALT" POWER TOOL - USA



DCS335B



DCS335M2T



NO. S 167-2 / 2X DEWALT 20V MAX XR® BODY GRIP JIGSAW - DCS335B (BARE) - DCS335M2T (4.0AH X 2) - Self Assembly

Our 20V MAX* XR® Cordless Barrel Grip Jig Saw features an efficient motor for powerful performance and extreme runtime. Precisely control blade speed up to 3,200 spm with the variable speed trigger and dial, for professional results no matter what you're cutting. 4-position orbital action lets you adjust for optimal cutting of a variety of materials. A bright LED light illuminates dim work surfaces and makes it easy to follow cut lines. The updated all-metal, lever-action keyless blade clamp is designed for quick and easy blade changes of t-shank jig saw blades. Also keyless, the shoe bevel is easy to adjust with detents at 0°, 15°, 30°, and a positive stop at 45°. A removable shoe cover helps protect materials from scratches, and an integrated dust blower helps remove dust and debris from your line of sight as you cut.

Item No.	Description	Weight (without Battery)	Price (set)
167-02-DCS335B	20V Max XR® Body Grip Jigsaw (Bare) <u>Technical Specifications</u> Voltage : 20V MAX (18V) Battery Type : Lithium-Ion No-Load Stroke Rate : 3200 spm Stroke Length : 26 mm Bevel Capacity : 45° Max.Cutting Capacity (Metal) : 13 mm *** Batteries and Chargers NOT included ***	2.4 kgs	
Item No.	Description	Weight (without Battery)	Price (set)
167-02X-DCS335M2T	20V Max XR® Body Grip Jigsaw <u>Technical Specifications</u> : Same as above <u>Included</u> : 2 x 4.0Ah (DCB182) Battery, 1pc DCB1104 Charger and DSWT17807 TSTAK Carrying Case	2.4 kgs	

NO. S 168-1 / 1X DEWALT 20V MAX XR® BRUSHLESS COMPACT RECIPROCATING SAW - DCS367B (BARE) - DCS367M2T (4.0AH X 2) - Self Assembly

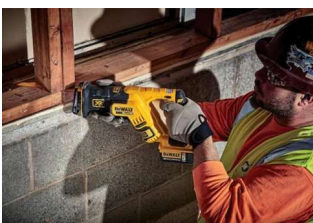
The DCS367B 20V MAX* XR® COMPACT Reciprocating Saw is a lightweight, compact saw designed to make cutting in between studs and in other tight spots easier than with traditional reciprocating saws. The brushless motor helps to provide up to 2.5x more run time** to get the job done. With a 1-1/8" stroke length and a variable speed trigger delivering up to 2,900 strokes per minute, this saw is fast and efficient. It also features a keyless, lever-action 4-position blade clamp for quick and easy blade changes in four directions for a variety of applications including flush cutting. A bright LED light is included to illuminate dark work areas. Tool only - batteries sold separately.



DCS367B



DCS367M2T



Item No.	Description	Weight (without Battery)	Price (set)
168-01-DCS367B	20V Max XR® Brushless Compact Reciprocating Saw (Bare) <u>Technical Specifications</u> Voltage : 20V MAX (18V) Battery Type : Lithium-Ion No-Load Stroke Rate : 0-2900 spm Stroke Length : 28.6 mm Max Cutting Cap. in Wood / Steel Pipe / PVC: 300/100/160mm Length x Height : 363 x 203 mm *** Batteries and Chargers NOT included ***	2.4 kgs	
Item No.	Description	Weight (without Battery)	Price (set)
168-01X-DCS367M2T	20V Max XR® Brushless Compact Reciprocating Saw <u>Technical Specifications</u> : Same as above <u>Included</u> : 2 x 4.0Ah (DCB182) Battery, 1pc DCB1104 Charger and DSWT17807 TSTAK Carrying Case	2.4 kgs	