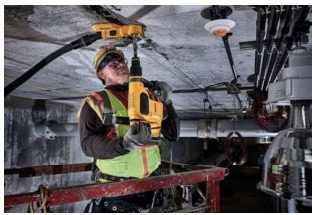


"DEWALT" POWER TOOL - USA



D25481K



NO. S 215-1X DEWALT 1050W 40MM 6KG 6.1J SDS-MAX COMBINATION HAMMER D25481K

The D25481K 40mm (1-9/16") SDS Max Combination Hammer, with its durable and hard hitting German engineered mechanism delivers 6 joules of impact energy for fast drilling, even in the hardest concrete. The light weight design makes it ideally suited for horizontal serial drilling for #4 - #8 rebar, coring and chipping in any mid to upper wall and ceiling application. The Active Vibration Control® technology employed delivers reduced user vibration for less user fatigue and greater productivity.

Additional Features

- Rotation stop mode for chiselling and impact stop mode for rotary only drilling with dry diamond cores.
- Perform & Protect: low vibration at 9.4m/s², minimising user fatigue.

Item No.	Description	Weight	Price (set)
215-01X-D25481K	1050W 40mm 6kg 6.1J SDS-Max Combination Hammer	5.9 kgs	
	<u>Technical Specifications</u>	<u>Included</u>	
	Power Input : 1050W	Carrying Case	
	No Load Speed : 0-540 rpm	Multi-position	
	Blows Per Minute : 0-2740 bpm	side handle	
	Impact Energy (EPTA) : 6.1 Joules		
	Drilling Capacity In Concrete : 12-40 mm		
	Core Drilling Capacity : Up to 100mm		
	Chuck Type : SDS-Max		
	Chuck Size : 40 mm		
	Vibration Control : Active Vibration Control®		
	Vibration Level : 9.4 m/s ²		

NO. S 215-2 DEWALT 1600W SDS-MAX 10KG 17.5J L-SHAPE DEMOLITION HAMMER D25881K

The DEWALT D25881K is a robust, 10 kg demolition hammer tailored for challenging concrete and masonry tasks. It boasts a powerful 1600 W motor that delivers an impressive 17.5 J impact energy, with a striking 1,060 to 2,160 BPM range for effective material break-up. The ergonomic L-shape design supports both horizontal and vertical orientation, enhancing work flexibility and operator comfort.

Additional Features:

- Electronic variable speed and impact energy control
- 12 chisel positions to tailor the orientation of flat chisels
- SDS max® toolholder for a wide variety of readily available accessories
- 360° adjustable side handle



D25881K

Item No.	Description	Weight	Price (set)
215-02-D25881K	1600W SDS-MAX 10kg 17.5J L-shape Demolition Hammer	10 kgs	
	<u>Technical Specifications</u>	<u>Included</u>	
	Power Input : 1600 W	Carrying Case	
	Impact Energy : 17.5 Joules	Multi-position	
	Tool Holder : SDS-Max	side handle	
	Blows Per Minute : 1060-2160 bpm		
	Vibration (Chiseling) : 14.9 m/s ²		
	Vibration Control : Active Vibration Control® (Perform & Protect)		